

#whmed
f @/whmedical
med.wh.com



Essential and safe: **MS**



ms

Safe, easy and cost-effective sterilization

Sterilization with high hygiene standards: The drying process with the door-closed together with antibacterial filters and fresh water ensures a high level of hygiene, cycle by cycle. The MS offers cycles for wrapped and unwrapped instruments, with an automated drying process.



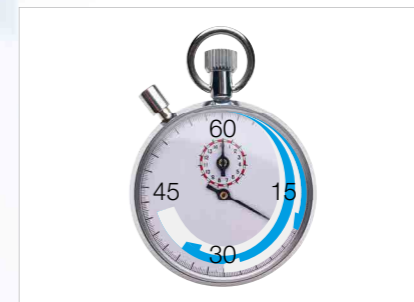
High biosecurity standards
Guaranteed by the closed-door drying process with anti-bacterial filters and the use of clean water in each cycle.



Flexibility and time-saving
The MS has cycles for both packaged and unpackaged products, with an automatic drying process.



Large capacity
With its 22-litre chamber and rack for five trays, the MS offers greater load capacity for practices with high volume of work.



Optimized workflow
Program the cycle to start at a set time to improve the efficiency of your workflow.



Safety first
Pressure and temperature controlled mechanically and electronically.



Ergonomics
The automatic filling and draining functions for the water tanks and the automatic door lock improve ergonomics and save you time.



Optimized
for efficient and fast work processes



Large capacity
22 litres
for high load capacity

Ergonomics
for comfortable use and maintenance

High hygiene standards
for your peace of mind

Anti-dust filter
for extended service intervals

Modular feet
for easy installation even in narrow spaces

Technical data

Your advantages at a glance

- › **High hygiene standards** for your peace of mind
- › Special **drying features** ensure processed items are easy to handle
- › **Large capacity** 22 litres for high work load
- › **Low maximum power consumption**
- › Accurate distribution of sterilization **temperature** and thus **high efficiency**
- › **Anti-dust filter** for long service intervals
- › Simple user interface for **comfortable handling and maintenance**
- › **Modular feet** for easy installation

MS sterilization programs

Sterilization cycle:	Unwrapped	Wrapped	Gentle
Temperature:	134°C	134°C	121°C
Holding time (minutes):	6'	6'	15'
Total cycle duration (minutes)*:	21'–25'	58'–62'	55'–59'
Max. load:	4 kg of unwrapped instruments	1–3 kg of wrapped instruments**	1 kg of wrapped heat-sensitive instruments or 4 kg of unwrapped instruments

Item supplied with reversible rack, 3 aluminium trays, drain tube, tray holder, factory test

* Total cycle duration – the times quoted are for the 220 V model and vary depending on the initial conditions of the chamber (hot/cold). The duration of the cycle may vary depending on the type and weight of the load, voltage, etc.

** The default drying guarantees the sterilization and drying of 3 kg in 62' total time, placing 1 kg per tray. The drying time may be manually reduced when processing 1 kg thus obtaining a total cycle time of 38'.



	MS 110 V	MS 220 V
Type:	MS 22	
Chamber size:	22 l	
Power supply:	100–125 V AC; 50/60 Hz; 15 A	200–240 V AC; 50/60 Hz; 8.75 A
Power consumption:	1.6 kW	1.75 kW
Overall dimension (w x h x d):	450 x 435 x 599 mm	
Weight (empty):	38 kg	
Mean sound levels (L _{WA}):	63 dB	
Main/Used water tanks:	4/3.5 l	
Working range:	8 cycles	
Usable space in chamber (w x h x d):	195 x 195 x 390 mm	
Connection types:	Serial port for printer, automatic water filling connection	

MS sterilizers were designed, certified and validated with the most stringent directives and standards:

93/42/EEC	Medical Device Directive	IEC 61326-1	Electromagnetic compatibility
2014/68/EU	Pressure Equipment Directive	IEC 61010-1	Safety requirements
ANSI/AAMI ST55	Table-top steam sterilizers	IEC 61010-2-040	Specific requirements for steam sterilizers

› The sterilizer can be validated according to EN ISO 17665-1

W&H Sterilization Srl.
Via Bolgara, 2
24060 Brusaporto (BG), **Italy**
t +39 035-66 63 000
f +39 035-50 96 988
office.sterilization@wh.com
med.wh.com

W&H Dentalwerk Bürmoos GmbH
Ignaz-Glaser-Straße 53, Postfach 1
51111 Bürmoos, **Austria**
t +43 6274 6236-0
f +43 6274 6236-55
med@wh.com
med.wh.com